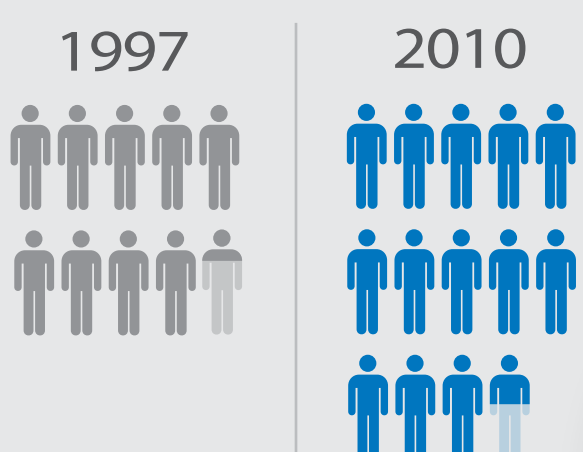


In 2010, 13.4 million people worked at least one day at home per week—an increase of over 4 million people (35 percent) in the last decade.

Working at Home is on the Rise

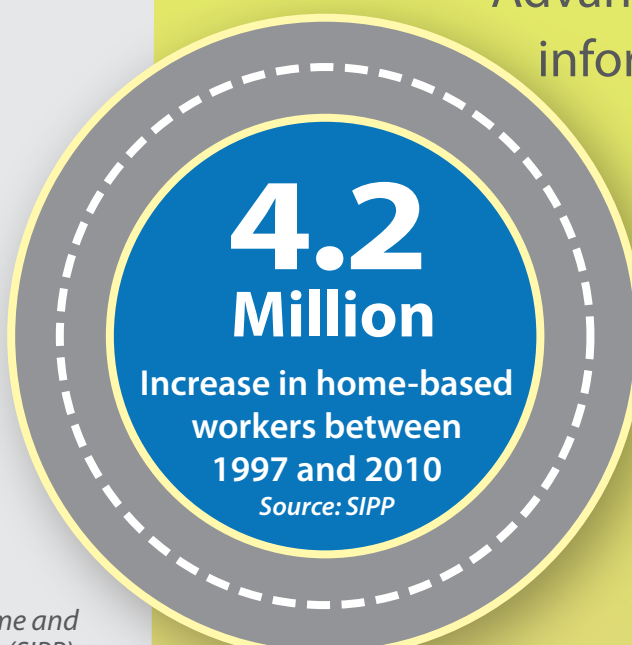


9.2 million
out of 132 million workers

13.4 million
out of 142 million workers

= 1 million people

Source: Survey of Income and Program Participation (SIPP)

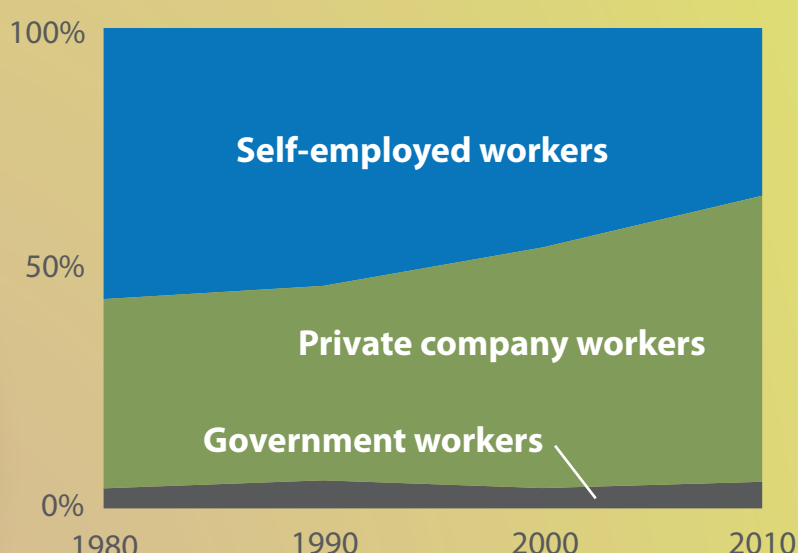


Advances in communication and information technologies have allowed for a more mobile workforce. This is reflected in a growing number of people working from home. Census Bureau surveys tell us who's working at home.

Home-based workers are:

More likely in the private sector

Of home-based workers, 39.4 percent were private company workers in 1980 compared to 59.5 percent in 2010. Home-based workers were the least likely to be government employees in both 1980 (4.2 percent) and 2010 (5.6 percent).

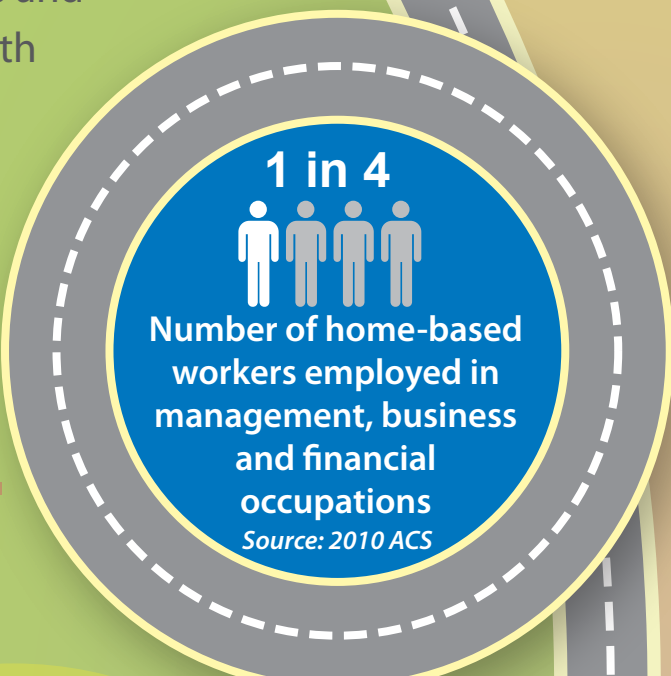


Source: 1980, 1990 and 2000 Decennial Census and 2010 American Community Survey (ACS)

Note: Incorporated self-employed and unpaid family workers were combined with private company workers.

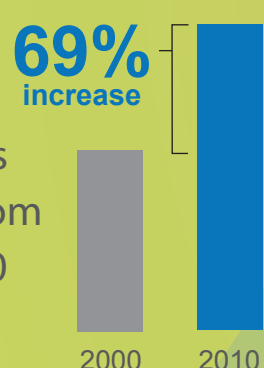
More likely to be in management and business

The responsibilities and tasks associated with management and business translate well to home-based work.

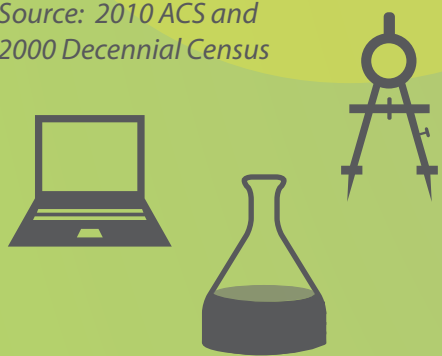


Growing quickly in computer, engineering and science occupations

Home-based work in computer, engineering, and science occupations increased 69 percent from 252,000 workers in 2000 to 432,000 workers in 2010.

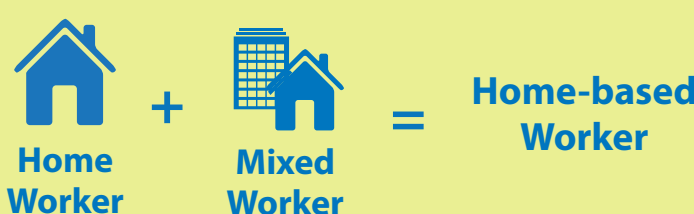


Source: 2010 ACS and 2000 Decennial Census



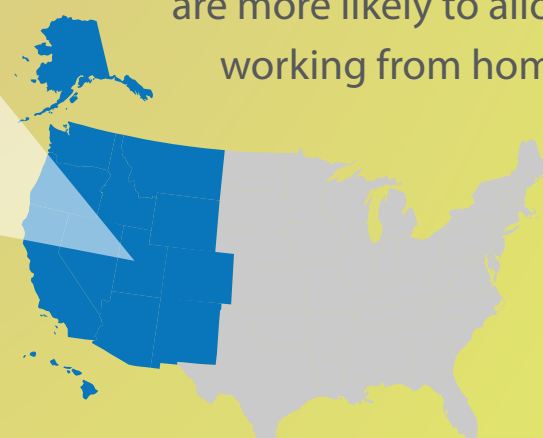
Defined as

- home-based worker:** a person who works exclusively or part of the time from home
- home worker:** a person who works exclusively from home
- mixed worker:** a person who works at both home and at the job site
- onsite worker:** a person who works exclusively at the job site



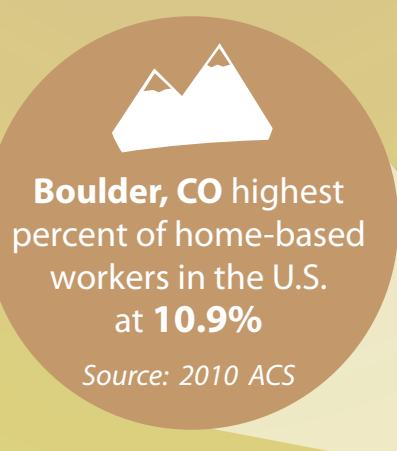
More likely to live in the West

Businesses in the West are more likely to allow working from home.



Western states include: Alaska, Arizona, California, Colorado, Hawaii, Idaho, Montana, Nevada, New Mexico, Oregon, Utah, Washington, Wyoming

Source: 2010 American Community Survey



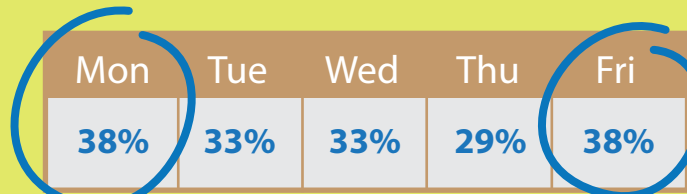
Diverse in their characteristics

	Home Worker	Mixed Worker	Onsite Worker
total workers	9.4 million	4.0 million	128.2 million
median age	47.5 yr. old	45.5 yr. old	41.3 yr. old
median salary	\$25,500/yr.	\$52,800/yr.	\$30,000/yr.
hours worked	37.4 per wk.	41.4 per wk.	37.4 per wk.
bachelor's degree or higher	50.5 percent	63.3 percent	29.7 percent

Source: Survey of Income and Program Participation (SIPP)

More likely to be working from home on Monday or Friday

Thursday is the least likely day to work from home.



Source: SIPP